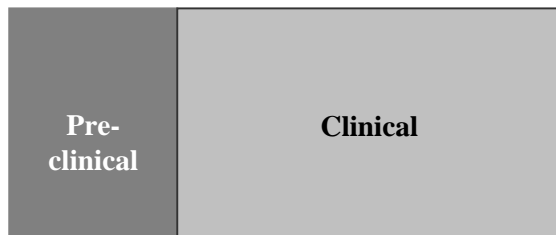


## Delimitation model of the curriculum

Alexander Telia, Zaza Avaliani, Kakhaber Chelidze

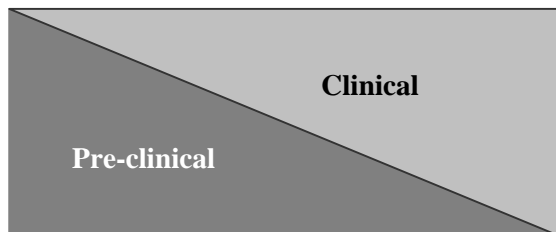
Tbilisi State Medical University, Georgia

This article is devoted to the very important problem of the educational process in Tbilisi State Medical University. This is the problem of the connection between two parts of the curriculum. There is a sharp demarcation between the first – pre-clinical and the second – clinical stages of the traditional curriculum (Fig.1). The influence of this weak connection over the quality and outcomes of the educational process is undesirable.



**Fig.1** Traditional model of the curriculum.

On the basis of international experience, modular system of the medical education is one of the best solutions of this problem. This system with vertical and horizontal integration will make educational process more effective and allow us to remove sharp demarcation between two, pre-clinical and clinical stages of the curriculum by changing its traditional scheme with more flexible "delimitation model" (Fig.2).



**Fig.2** "Delimitation model" of the curriculum.

Changes of the curriculum in this manner will be made by implementation of two complex, modular courses. The first one under a conditional name "Patient, doctor and society" will contribute formation of the professional skills at the beginning of the education; and the second – "The mechanisms and management of diseases" will allow us to enrich and make deeper clinical stage of the curriculum.

The first course "Patient, doctor and society" will begin from the first year of instruction and will represent the unique rudiment of clinical stage with the increasing intensity and will consist of following directions:

- Professional ethics and values
- Communicational skills
- Patient care
- Basic clinical manipulations

- Clinical experience

For the purpose of the clear idea of the structure of the second course under a conditional name "The mechanisms and management of diseases" lets us examine the teaching modular format of the myocardial ischemia (Fig.3).

Myocardial ischemia – clinical part

- Causes
- History
- Physical
- Differentials
- Lab studies
- Imaging and other studies
- Procedures

Anatomy

- Micro- and macroscopically anatomy of the heart and coronary arteries

Pathophysiology

- Determinants of myocardial oxygen consumption
- Regulation of coronary blood flow:
  - Metabolic regulation
  - Endothelial control of coronary vascular tone
  - Autoregulation
  - Extravascular compressive forces
  - Transmural distribution of myocardial blood flow
  - Neural and neurotransmitter control
  - Effects of coronary stenoses
  - Coronary flow reserve and hyperemia
  - Coronary collateral circulation and angiogenesis

Epidemiology

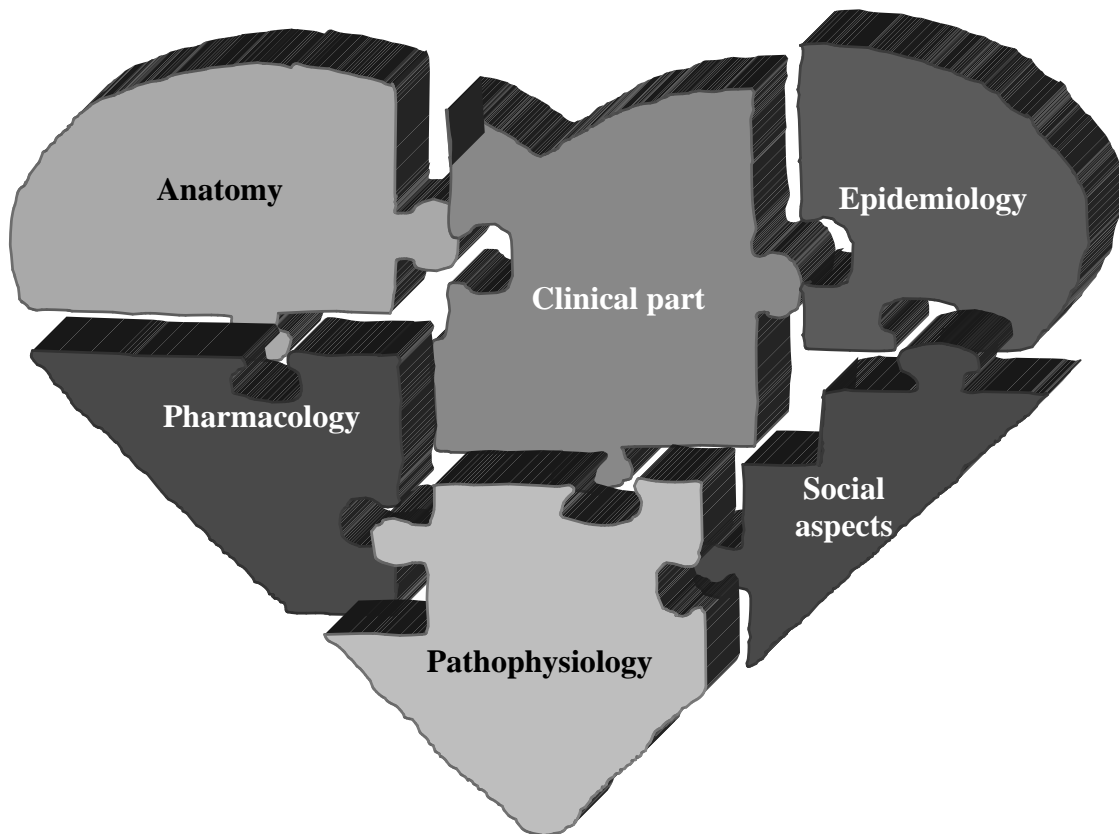
- Frequency, international incidence, morbidity /mortality.

Pharmacology

- Pharmacological agents – medical care
- Surgical care

Rehabilitation

- Diet
- Activity
- Rehabilitation



**Fig.3** Modular format of myocardial ischemia

In conclusion it is possible to say that the “delimitation model” contains a large quantity of the promising trends and special features. On the basis of the aforesaid, we think that the modification of the training program will

allow us to increase the effectiveness of teaching process and pass to the contemporary harmony of training the doctors of the XXI century.